

Baton Rouge Green: Local Efforts and Statewide Outreach





Baton Rouge Green has been inspiring and leading the planting and sustaining of our community trees and greenspaces.

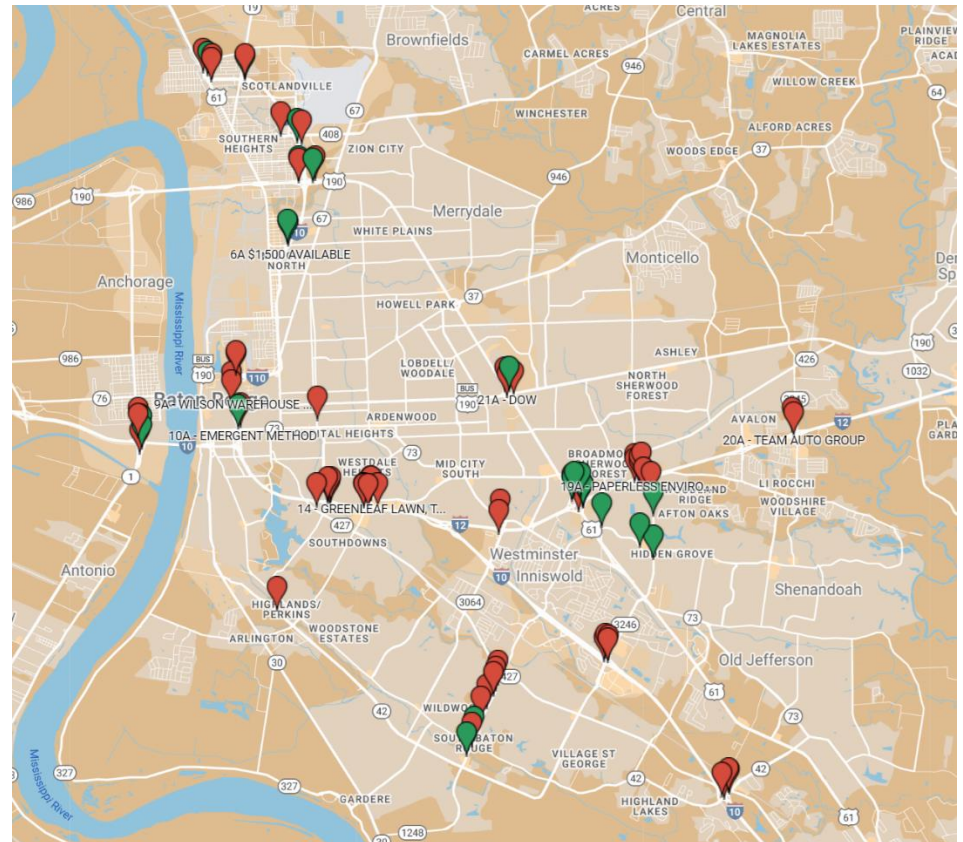
- We are a 501c3 non-profit. Our funding sources are roughly:
- Corporate & Private Sponsorship 50%
- Membership Giving 10%
- Professional Services 10%
- US Forest Service 30%

Programs



Living Roadways

- **4000+ trees planted across 26+ sites**
- **1.3m Gallons of stormwater runoff prevented annually**
- **1.6 Tons of pollution removed from air annually**
- **66 Tons of carbon sequestered annually**



Living Roadways



City Citrus Pick Event



EBR Public Tree Inventory



Village Wood Retirement Community Tree Inventory (Program Expansion)



Arbor Day: Plantings



Arbor Day: Giveaway

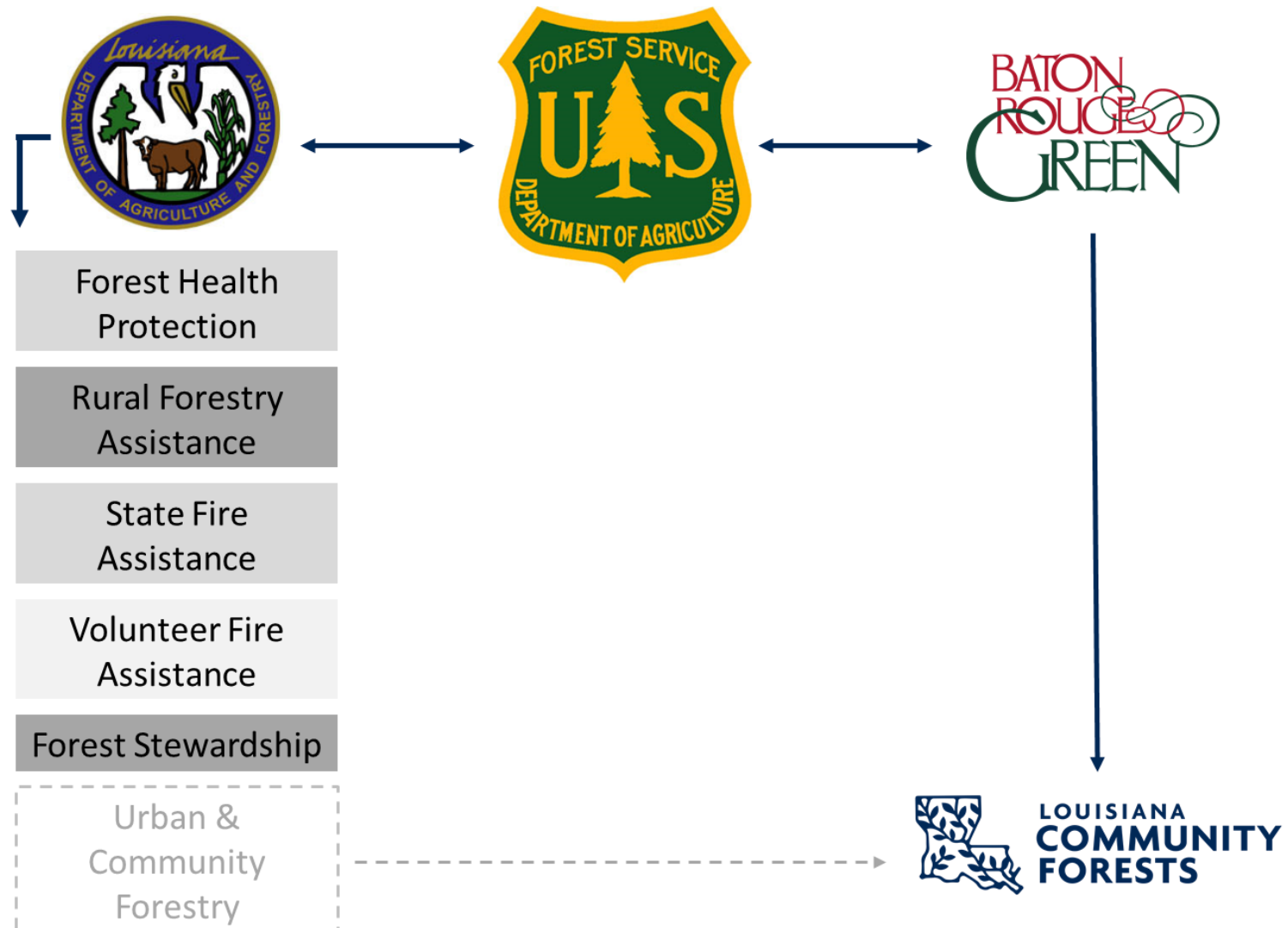


Louisiana Community Forests: Statewide Outreach & Programming

- **LCF Structure**
- **Technical Assistance**
- **Financial Assistance**
- **More Than Paper**
- **Share The Fruit**



Louisiana Community Forests



Louisiana Community Forests:

1. Technical Assistance
2. Financial Assistance / Community Assistance Agreements

Louisiana Community Forests:

NOLA Tree Canopy Project

City of New Orleans Tree Canopy Project

May 18, 2021

Prepared For:

Susannah Burley
Executive Director
Sustaining Our Urban Landscape
www.soulnola.org

Robert Seeman
Director of Operations
Baton Rouge Green

Prepared By:

Nathaniel Morton, Andrew Brenner
NV5 Geospatial
Saint Petersburg, FL 33716



NV5 GEOSPATIAL
powered by QUANTUM SPATIAL

NV5 Geospatial
10033 Dr MLK Jr St N, Suite 200
Saint Petersburg, FL 33716

City of New Orleans
Tree Canopy/Protection Study

City of New Orleans Tree Canopy Project Appendix 07 - Open Space Examples

- Tree Canopy**
 - Large Trees
 - Medium Trees
 - Small Trees
- Open Space**
 - Open Space (XL)
 - Open Space (L)
 - Open Space (M)
 - Open Space (S)
- Building Buffers**
 - Building
 - Building (6')
 - Building (15')
 - Building (25')
- Impervious**
 - Impervious
 - Impervious (2')
 - Impervious (2.5')
 - Impervious (3')



NV5 GEOSPATIAL
powered by QUANTUM SPATIAL



Louisiana Community Forests: Alexandria Management Plan

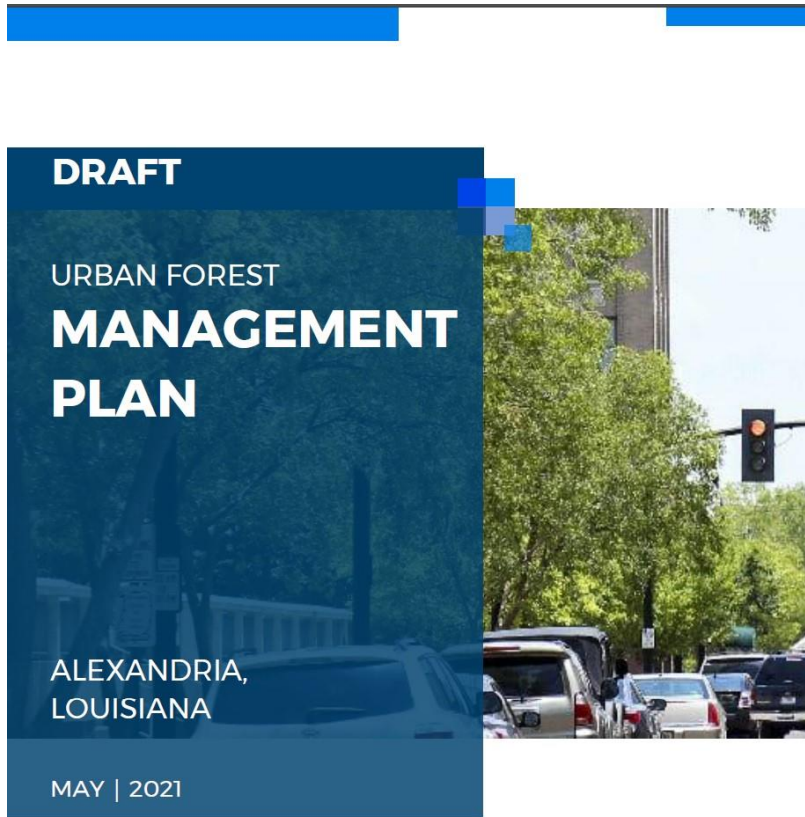


TABLE OF CONTENTS

Executive Summary	I
Introduction	1
Alexandria Urban Forest Management Plan Mission Statement	1
The Vision for Alexandria's Urban Forest	1
Plan Purpose	2
Background	2
Defining the Urban Forest	3
Benefits of the Urban Forest	4
Key Issues Facing Urban Forests	6
Alexandria's Urban Forestry Background	8
Management Planning Process	9
Planning Approach	9
Understanding Challenges and Opportunities Facing the Urban Forest	10
Primary Framework of the Urban Forest Management Plan	11
Goal and Action Framework	12
What Do We Have and What Do We Want?	13
Existing Policies and Plans Findings	14
City Workflows and Operations Findings	15
Baseline Conditions Findings	17
Urban Forest Benchmarks Findings	18
Community Engagement Findings	20
Urban Forest Audit System	21
Summary of Findings	22
How Do We Get What We Want?	23
City of Alexandria Urban Forestry Goals	25
Tree Management Policy (MP)	28
Capacity, Training, Authority (CT)	31
Budget and Funding (BF)	36
Assessment and Plans (AP)	41
Community Engagement (CE)	46
Green Asset Management (GA)	51
How Are We Doing?	56
Implementation Guidance	57
Monitoring Plan	57
Conclusion	64
Appendices	A
Appendix A. Guidance to Develop a Tree Advisory Committee	B
Appendix B. Guidance to Support a Neighborhood Tree Organization	H
Appendix C. Funding Mechanisms	L
Appendix D. Trees and Hardscape Conflicts Solution Workbook	N
Appendix E. Recommended Updates to Policies and Procedures	Y
Appendix F. Storm and Disaster Management Guidance	CC

Louisiana Community Forests: SUFR Grant: Moncus Park Lafayette



- Invasive species removal
- Replanting
- Educational signage

Partners:

- Moncus Park
- LA Conservation Corps / American Conservation Corps

Louisiana Community Forests: Share The Fruit



- Agroforestry Equity Coordinator
- City Citrus
- Baton Roots: Established food networks + Community Ag



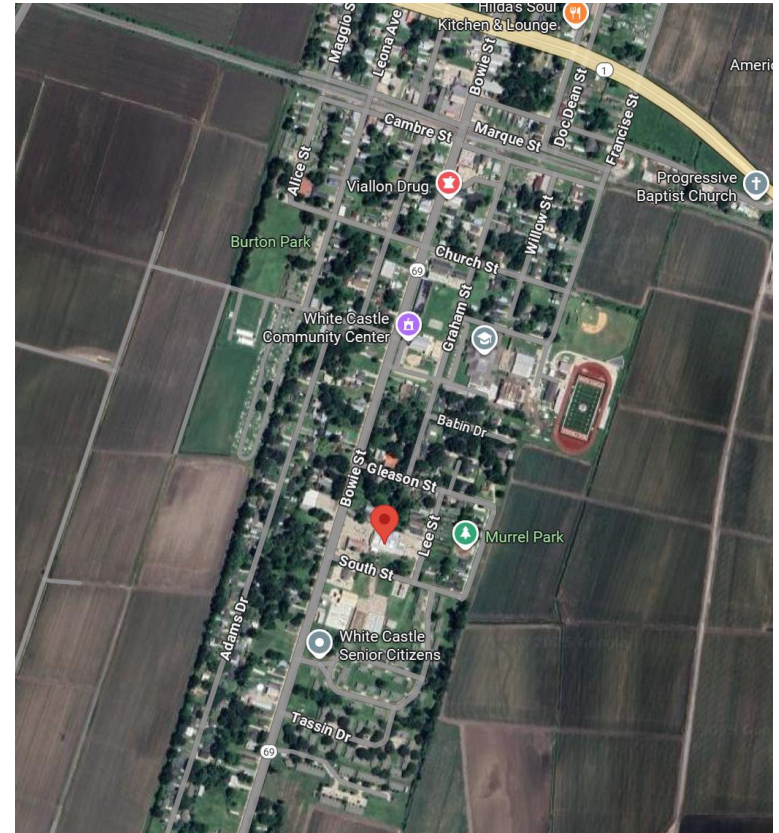
Louisiana Community Forests:

Share The Fruit: White Castle



Private x Public Partnership:

- LCF
- LSU Ag Center: Healthy Communities Coalition
- Daigle's Supermarket (land donation)
- Iberville Parish Government
- Dow Chemical (funding)

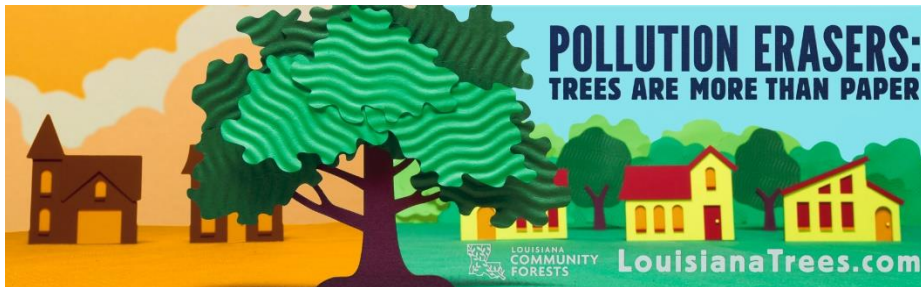


Will your community be next?

Louisiana Community Forests: More Than Paper (PSA Campaign)



v1



v2

Hurricane Season
2025

Now running and
available for
partnership



batonrougegreen.com



BATON
ROUGE
GREEN



Speaker: Christopher Cooper
Baton Rouge Green, Director of Operations,
LA Community Forestry Program, State Coordinator

chris@louisianaforests.com
225.381.0037