



Using Native Plants in Beautification Projects

Tammany Baumgarten



Detail from "Louisiana Indians Walking Along a Bayou" by Alfred L. Boisseau, 1847.



Courtesy of the Southwest Arkansas Regional Archives









Donate

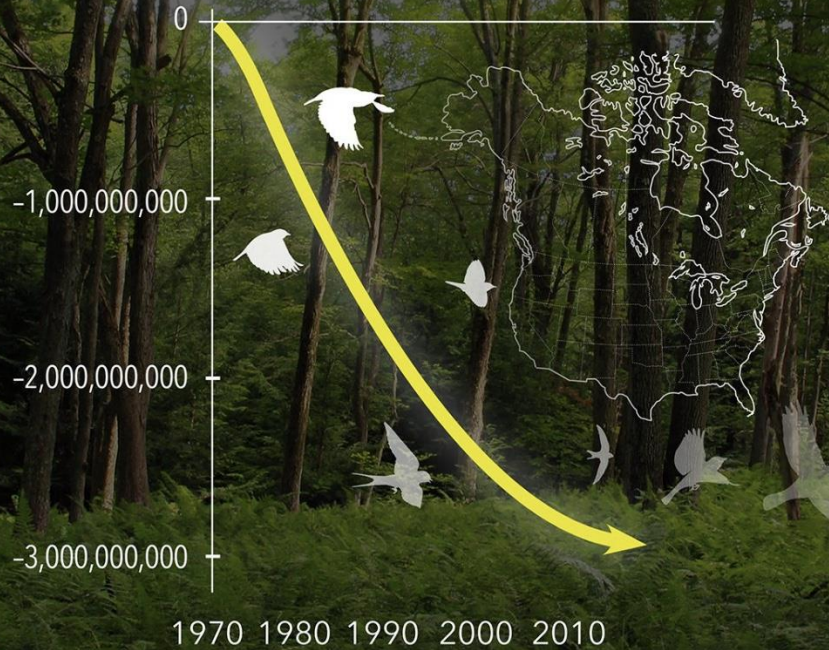
Over One-third of Biodiversity in the United States is at Risk of Disappearing

New report addresses nation's extinction crisis by providing data and conservation insights

FEBRUARY 6, 2023



2.9 billion birds gone since 1970



Science
AAAS

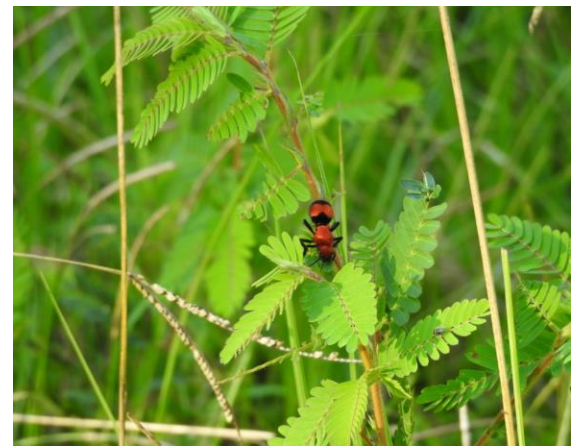
Courtesy of the Cornell Lab of Ornithology, Source: Science, 2019

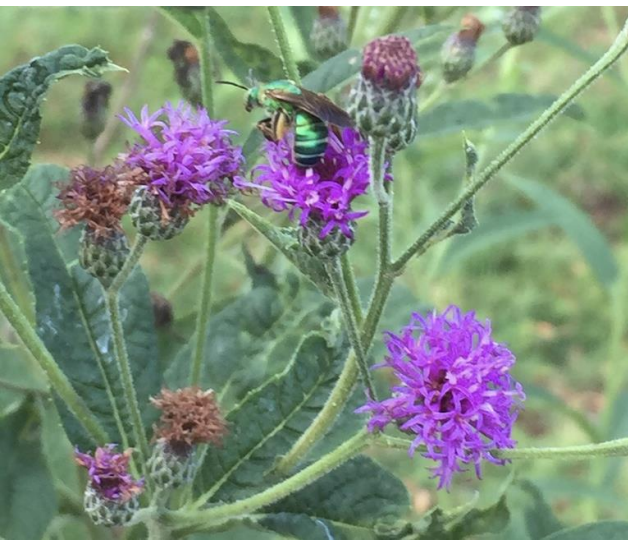
Forest by Nicholas Tonelli/Creative Commons, Map from Birds of North America birdsna.org

Note: This graph has been updated to reflect the technical image from the *Science* paper.











Landscapes need to...

- **Sequester Carbon**
- **Manage the Watershed**
- **Support a Food Web**
- **Support Pollinators**
- ***Make People Happy***

***How does your space
measure up?***

Doug Tallamy





















THE UNIVERSITY of
NEW ORLEANS

Administration and Building

President
Academic Affairs
Business Affairs
Research
Professional & Continuing Education
Graduate School • Service Learning



Privateer



Wellness Moment

Research has shown that taking a moment to engage with the outdoor world can help reduce stress.

Take 60 seconds and engage with your senses:

- What do you see?*
- What do you hear?*
- What do you smell?*
- What do you feel?*

THE UNIVERSITY of
NEW ORLEANS





















“A plant is only worth growing if it looks good when it is dead.”

Piet Oudalf

Designer of the Highline, NY

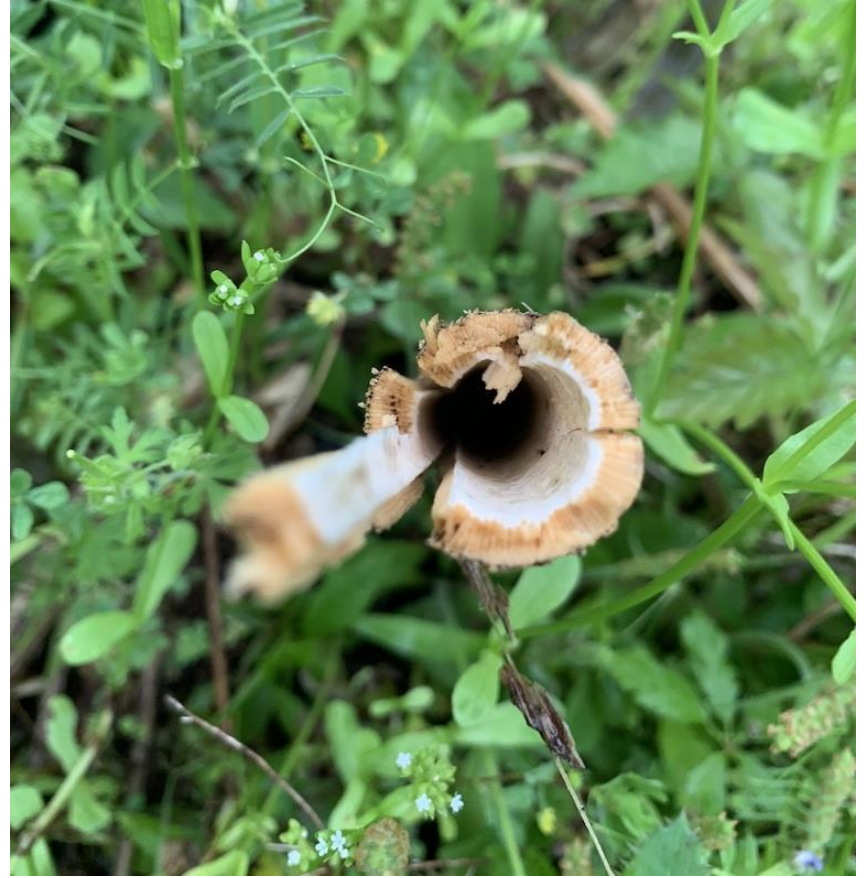






















Louisiana
CERTIFIED
Habitat

This property conserves
Louisiana's natural heritage:
native plants, animals, lands
and waters.

www.LNPS.org





BIG LAKE NATIVE PLANT TRAIL

WHY GARDEN WITH NATIVE PLANTS?

Native plants are adapted to the local climate and soil conditions where they naturally occur. These important plant species provide nectar, pollen, seeds and foliage that serve as food for native butterflies, insects, birds and other animals. They also provide shelter for wildlife. Native plants are also advantageous because they typically require less pesticides, watering, as well as maintenance than lawn and non-native ornamentals. By planting natives in your yard, you can promote biodiversity and provide a rich habitat for pollinators, birds and other wildlife!

This project, a joint effort of the New Orleans Town Gardeners, the Native Plant Initiative of Greater New Orleans, and City Park, includes native plants which are suitable for home landscapes many of which are often available for purchase at the Pelican Greenhouse in City Park.





Pollinator Habitat



-In Progress-

This space is being created
to feed and shelter

THIS GARDEN FEATURES

NATIVE PLANTS



for birds, bees and butterflies

How do I care for this garden?

**LEAVE THE LEAVES IN THE FALL
LEAVE STALKS AND SEEDHEADS
NO PESTICIDES OR LAWN CHEMICAL**

If something is eating the plants
I created a healthy ecosystem!



This natural space is planted
with native grasses and flowers
to support native pollinators,
birds and wildlife.

•DO NOT MOW OR SPRAY•

This is a pesticide and
herbicide free zone.









© Springer Environmental





BRAKING
NOISE
OPINANCE
ENFORCED









MARCEL MARCOU
1863 - 1945

Marcel Marcou was a French architect and designer who worked in the United States from 1900 to 1945. He is best known for his work on the design of the modernist building at the University of California, Berkeley, which was completed in 1937. He also designed the modernist building at the University of California, San Diego, which was completed in 1967. He was a member of the American Institute of Architects and the American Academy of Architecture.



Native Plants At Work

Native plants are uniquely suited to thrive in our environment and provide the best habitat and food for pollinators like birds, bees, and butterflies. They are beautiful landscape options that enhance local biodiversity and protect water quality.





a little advice...

- Agree on Aesthetic & Maintenance regime
- Hire a Pro
- Signage
- Maintenance plan











**ANPP –
Lafayette/Arnaudville**
greauxnative.org



Louisiana Native Plant Society
lnps.org



Native Plant Initiative of GNO
npi-gno.org





3 Louisiana Chapters

- Pontchartrain Basin
- Baton Rouge
- Acadiana







*It takes **6,000 to 9000**
caterpillars to make one clutch
of chickadees.*













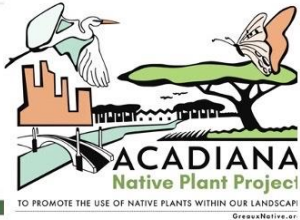






Rethink Pretty





Thank you!