

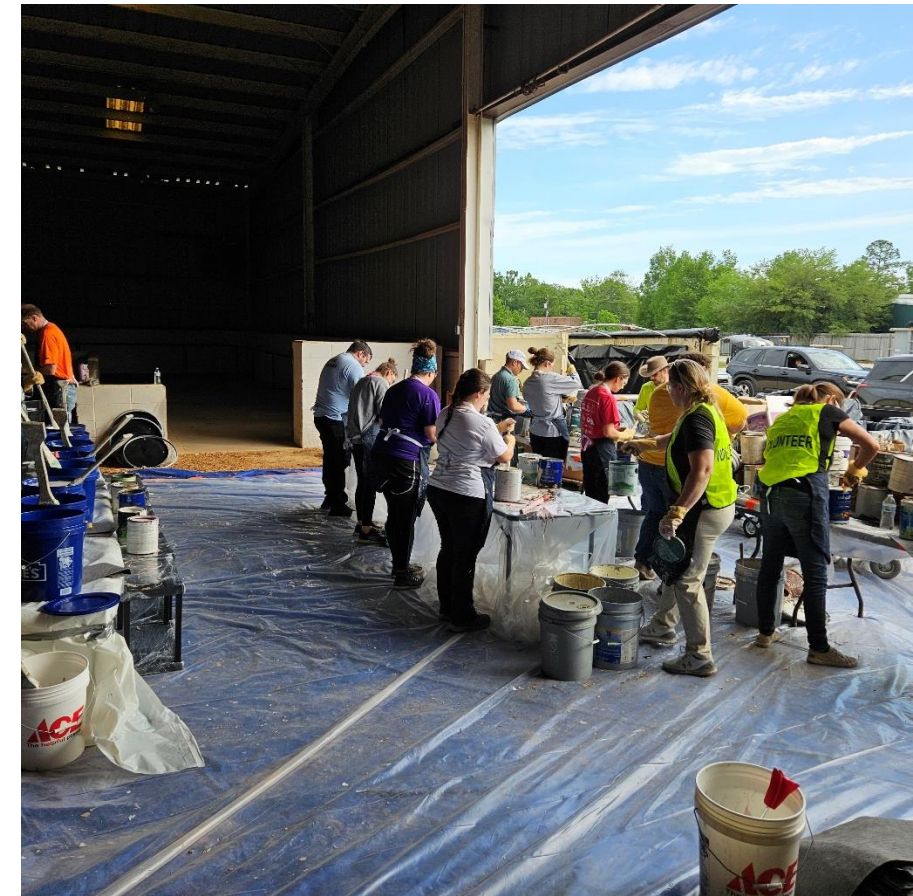


HOUSEHOLD HAZARDOUS WASTE EVENTS

St. Tammany Parish Government
Department of Environmental Services

Goal

Provide an efficient service to residents of St. Tammany Parish that ensures the safe, responsible disposal of hazardous household wastes and, when possible, remove recyclable materials from the waste stream.

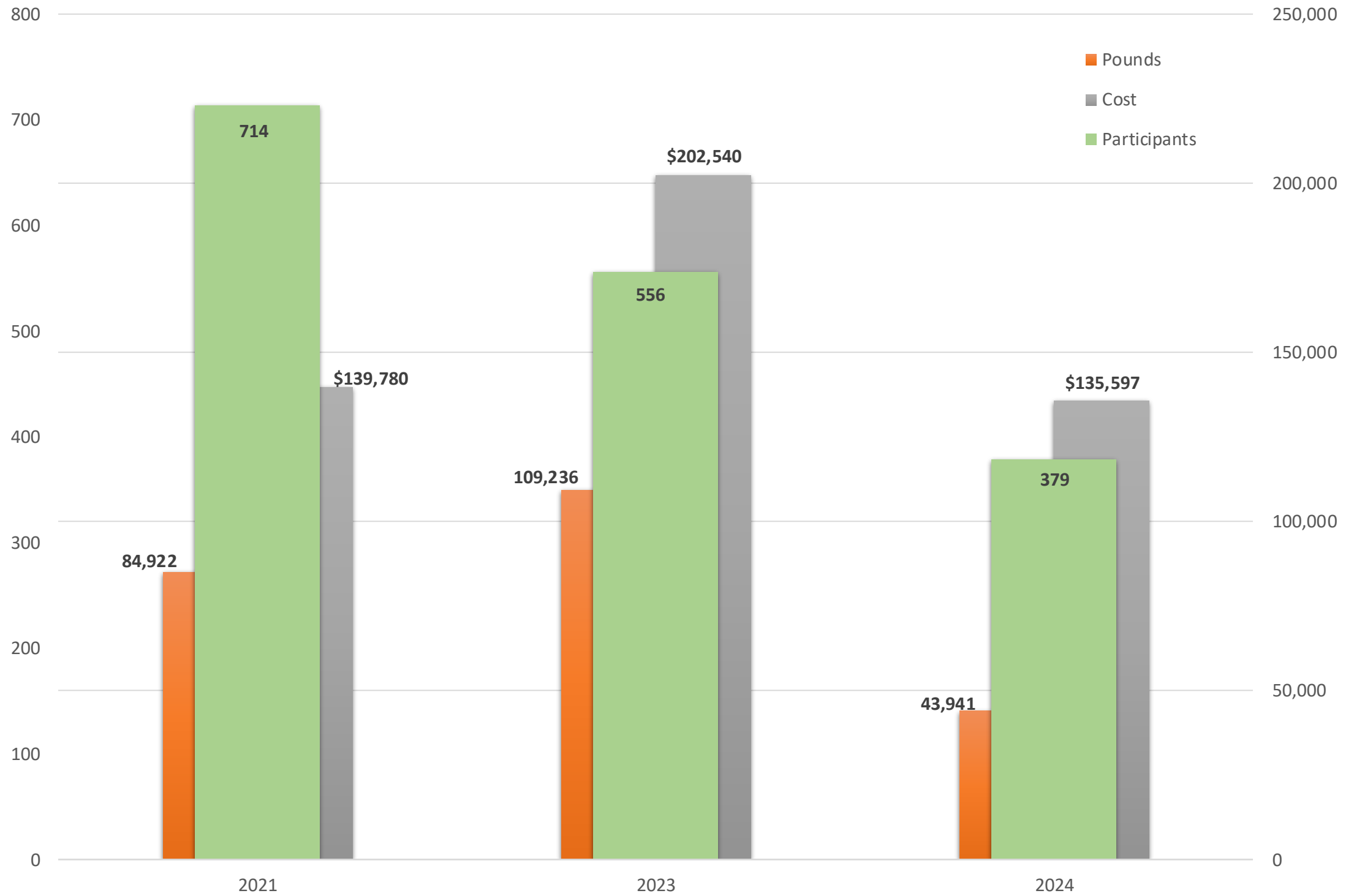


THE HARD PART: THE UNKNOWNNS

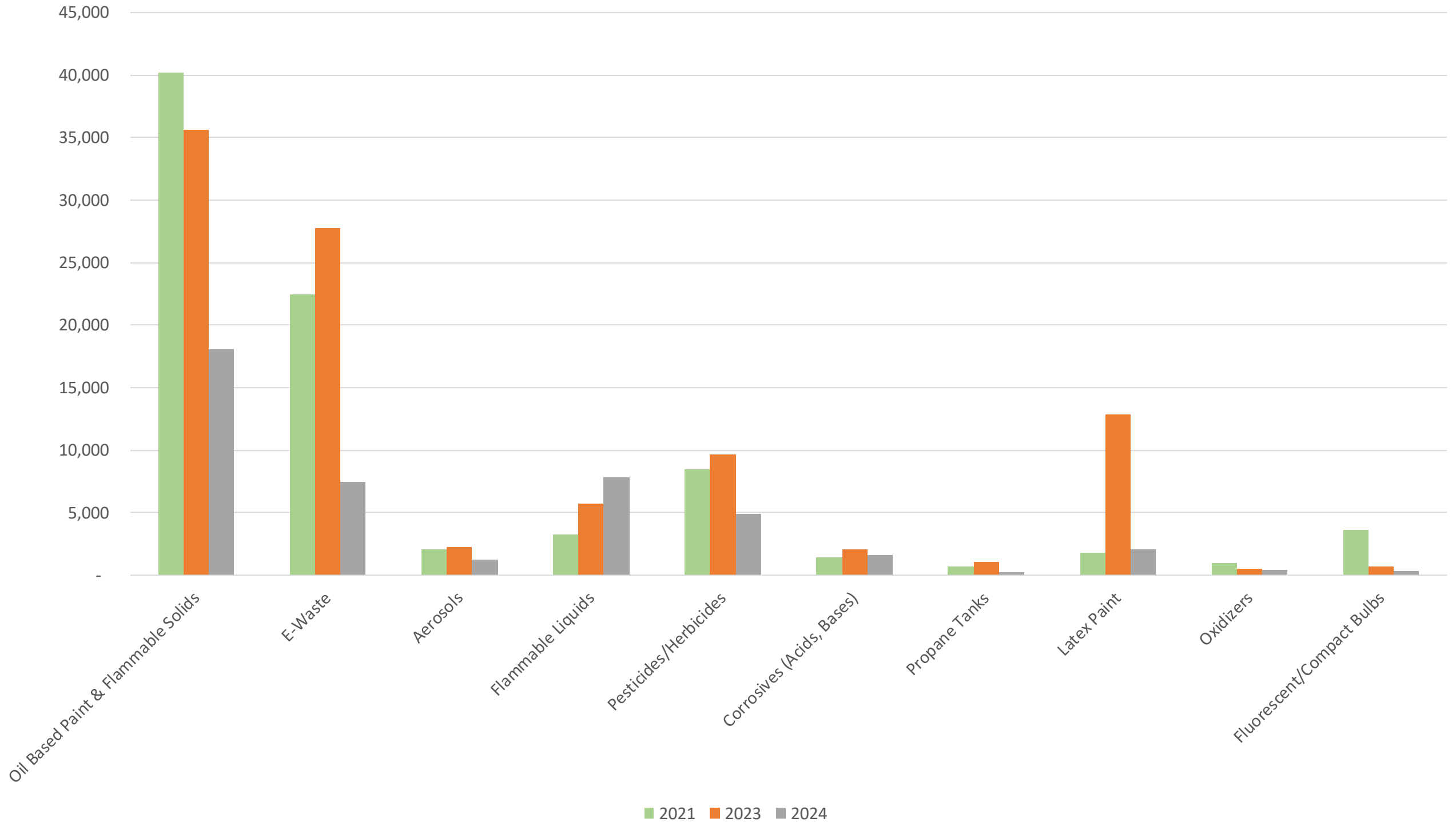
- How many people will show up?
- How much waste will they bring?
- How much will it COST?



Participants, Pounds, and Cost Over Years (2021, 2023, 2024)



Waste Types Over Years (2021, 2023, 2024)



TOOLS TO HELP

- **HHW Day Vendor Contract**
- **Pre-registration**
- **List of acceptable waste**
- **Staffing / Volunteers**
- **Community Partners**



Vendor Contract

Detailed Price Sheet

| Line Item | Description/Type of Waste | Units | Packing Method | Disposal Method | Price Per Unit |
|-----------|---------------------------|------------------|----------------|-----------------|----------------|
| 17 | Aerosols | CYB | | | |
| 18 | Aerosols | 55 gal | | | |
| 19 | Aerosols | 5 gal | | | |
| 20 | Flammable Liquids | 55 gal | | | |
| 21 | Flammable Liquids | 5 gal | | | |
| 22 | Oil Based Paint | CYB | | | |
| 23 | Oil Based Paint | Roll-off (25 yd) | | | |
| 24 | Flammable Solids | CYB | | | |

Some HHW Day Vendors:

- Clean Earth
- Tradebe
- Clean Harbors

| Line Item | Event Costs | |
|---------------------------------|-------------------------------|----|
| 1 | Mobilization / Demobilization | \$ |
| 2 | Site Setup | \$ |
| 3 | | |
| 4 | | |
| Staff Costs | | |
| 5 | On-Site Labor | \$ |
| 6 | | |
| Rental Costs | | |
| 7 | Equipment Rentals: Forklift | \$ |
| 8 | Equipment Rentals: | \$ |
| 9 | | |
| 10 | | |
| Supplies & Materials | | |
| 11 | Liners, Roll-off Box | \$ |
| 12 | | |
| 13 | | |
| Transportation Charges | | |
| 14 | Waste Transportation | \$ |
| 15 | | |
| 16 | | |

Subtotal: \$

Waste Disposal Costs

| Line Item | Description/Type of Waste | Units | Packing Method | Disposal Method | Price Per Unit |
|-----------|----------------------------|------------------|----------------|-----------------|----------------|
| 17 | Aerosols | CYB | | | |
| 18 | Aerosols | 55 gal | | | |
| 19 | Aerosols | 5 gal | | | |
| 20 | Flammable Liquids | 55 gal | | | |
| 21 | Flammable Liquids | 5 gal | | | |
| 22 | Oil Based Paint | CYB | | | |
| 23 | Oil Based Paint | Roll-off (25 yd) | | | |
| 24 | Flammable Solids | CYB | | | |
| 25 | Poison Liquids | 55 gal | | | |
| 26 | Poison Solids | CYB | | | |
| 27 | Corrosive Acids, inorganic | 55 gal | | | |
| 28 | Corrosive Bases, inorganic | 55 gal | | | |
| 29 | Propane - small | each | | | |
| 30 | Propane - BBQ size | each | | | |
| 31 | Latex Paint | CYB | | | |
| 32 | Latex Paint | Roll-off (25 yd) | | | |
| 33 | Reactives | 5 gal | | | |
| 34 | Oxidizers | 5 gal | | | |
| 35 | Oxidizers | 55 gal | | | |
| 36 | Mercury | 5 gal | | | |
| 37 | Fluorescent Bulbs | lb. | | | |
| 38 | Compact Fluorescent Bulbs | lb. | | | |
| 39 | Used Oil | 55 gal | | | |
| 40 | Oil Filters | 5 gal | | | |
| 41 | Isocyanates | 5 gal | | | |
| 42 | Alkaline Batteries | lb. | | | |
| 43 | Electronics | lb. | | | |

Subtotal: \$



Pre-Registration

Sign-up Genius

 Sign Ups

 Stats

 Volunteers

Sign Up:

HOUSEHOLD HAZARDOUS WASTE COLLECTION DAY

Group:

Keep St. Tammany BEAUTIFUL (1 member)

[Customize Report](#)

Sign Up Activity

Total Slots:

500

Filled Slots:

487

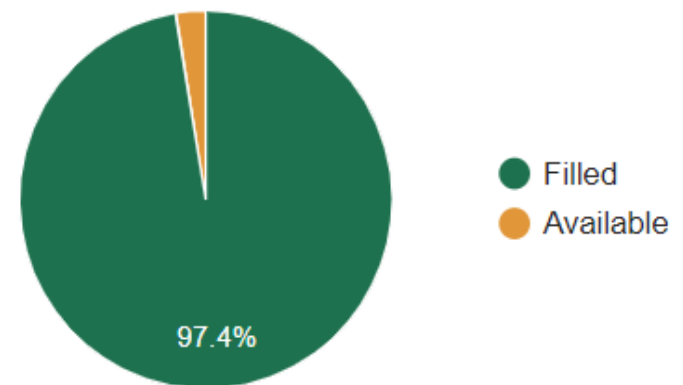
Available Slots:

13

% Filled:

97.40%

Note: Items with unlimited quantity are not included in this graph.



Pre-Registration

Sign-up Genius

| Time | HHW DAY | |
|---------------|---------------------|-------------------|
| 8:00am-8:15am | HHW DAY | Full |
| | All 32 slots filled | |
| | | Lynn Folse |
| | | Barbara Hodge |
| | | JoAnn Hamburger |
| | | Sean Goodgion |
| | | Sean Rockhold |
| | | Heather Lee |
| | | Gerald Mahorney |
| | | Caitlin Davenport |
| | | Caroline Oliveria |
| | | Zoya Romanenko |
| | | +22 more |



List of Acceptable Wastes



- This will be a CONTACTLESS drive-thru event accommodating passenger vehicles only.
- Containers must be 5 gallons or less.
- Dry paint may be placed in your residential trash.
- Any item deemed unsafe or unidentifiable by staff will not be accepted.
- NO TRAILERS ALLOWED

WHAT NOT TO BRING:

- Alkaline Batteries
- Ammunition & Explosives
- Business, Commercial or Industrial Waste
- Construction / Demolition Debris
- Fire Extinguishers
- Fireworks
- Flares
- Freon or Helium Tanks
- Furniture
- Medical Waste / All Medicines
- Radioactive Devices:
 - Smoke Detectors
- Styrofoam Waste:
 - Peanuts, Packaging
- School Lab Waste
- White Goods/Appliances

WHAT TO BRING:

- Acids
- Auto Products:
 - Used Oil, Antifreeze, Brake Fluid, Diesel, Oil & Filters, Gasoline, Automobile & Truck Tires (Limit 5 per vehicle)
- Batteries:
 - NiCd, Lead Acid
- Cleaning Solvents:
 - Corrosive Cleaners, Disinfectants, Oven Cleaners, Degreasers, Bleach, Bowl Cleaners
- Cooking Oil
- Document Shredding (Limited to 3 Bankers Boxes)
- Electronic Equipment
- E-waste:
 - Computers, Copiers, Cell Phones, Fax Machines, Ink Cartridges, TVs, Stereos
- Fluorescent Tubes & Bulbs
- Glass
- Glue
- Glycerol, Glycerin
- Lawn & Garden Products:
 - Pesticides, Herbicides, Fungicides, Fertilizers, Bug Sprays
- Lighter Fluid
- Metallic Mercury
- Moth Balls
- Paint Products:
 - Latex, Oil, Thinners, Stain, Varnish, Shellac, Turpentine, Polishes, Wood Preservatives, Spray Paint
- Pool Chemicals
- Propane Tanks & Bottles

11.16.2024

8 AM TO 12 PM

Northshore Square Mall Parking Lot
150 Northshore Blvd.
Slidell, LA 70460

SCAN THE QR CODE &
REGISTER A DROP-OFF TIME
(EVENT LIMITED TO 500 CARS)



Household Hazardous Waste Day is a program of Keep St. Tammany Beautiful.
Looking to get involved? Email us at kstb@stpgov.org to volunteer!
St. Tammany Parish Government | 985.898.2535



STAFFING / VOLUNTEERS

Employees

- Option of using a schedule change rather than paying overtime

Volunteers

- Louisiana Department of Environmental Quality
- Keep Louisiana Beautiful Affiliates
 - Keep Abita Beautiful
 - Keep Mandeville Beautiful
 - Keep Slidell Beautiful
- Knights of Columbus
- Local Businesses



COMMUNITY PARTNERS

Local Stores

- Lowe's
- Home Depot
- Batteries Plus

Community Groups

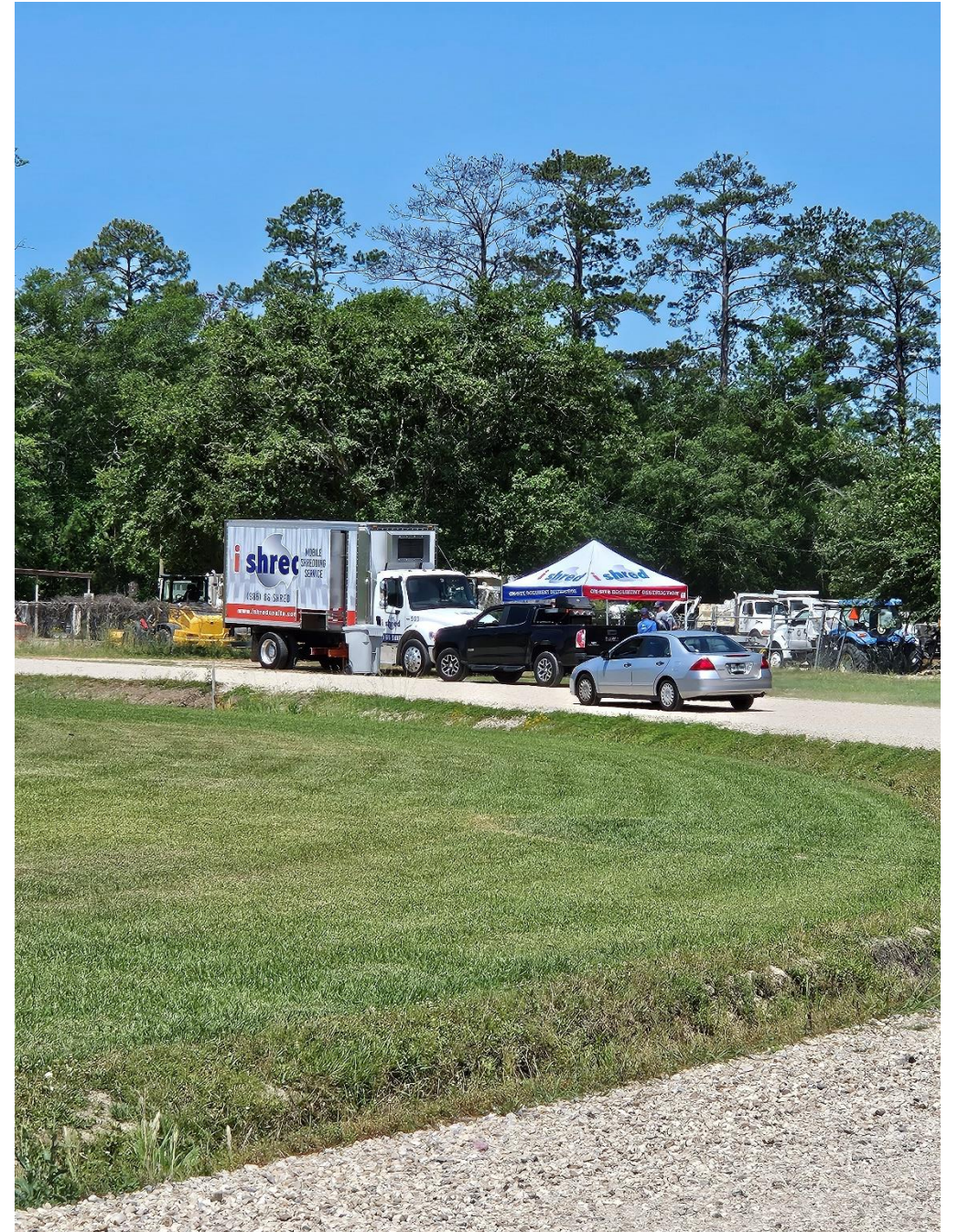
- Habitat for Humanity

Regional Recyclers

- Capital Area Corporate Recycling Council (CACRC)

Local Recyclers

- Lemon Tree Recycling Services
- i-Shred





St. Tammany Parish Government



Our Vision

St. Tammany Parish will be the place to be along the I-12 Corridor. Through EFFICIENT, TRANSPARENT and ACCOUNTABLE operations, St. Tammany Parish Government will promote a STRONG ECONOMY with INNOVATIVE DEVELOPMENT, while investing in our natural environment and cultural diversity, to preserve the QUALITY OF LIFE that makes St. Tammany Parish vibrant and unique.



Contact Us

ST. TAMMANY PARISH GOVERNMENT
21490 KOOP DRIVE
MANDEVILLE. LA 70471

TIM BROWN

DIRECTOR
DEPARTMENT OF ENVIRONMENTAL SERVICES

p 985.898.2535
e tbrown@stpgov.org
w stpgov.org