



WELCOME TO

# Conducting a Household Hazardous Waste Collection Event

# PLANNING THE EVENT:

- Coordinating a location
- Acquire LDEQ Permits/Approvals
- Advertising
- Determine what materials will be collected





# HOUSEHOLD HAZARDOUS MATERIALS COLLECTION

## MATERIALS ACCEPTED

- ✓ Acids
- ✓ Degreasers
- ✓ Moth balls
- ✓ Aerosol cans
- ✓ Disinfectants
- ✓ Oven cleaners
- ✓ Arsenic
- ✓ Drain cleaners
- ✓ Paint: latex, oil, stain, varnish, shellac
- ✓ Auto products including used oil, antifreeze, brake fluid, diesel, oil & fuel filters, gasoline, gas & oil mixtures
- ✓ Electronic equipment, ink cartridges, copiers, cell phones, fax machines, computers
- ✓ Paint thinner
- ✓ Automobile tires (limit 5)
- ✓ Fire extinguishers
- ✓ Polishes
- ✓ Cooking oil
- ✓ Fluorescent tubes
- ✓ Pool chemicals
- ✓ Batteries including NiCD, lead acid, alkaline, rechargeable
- ✓ Glue
- ✓ Propane tanks and battles
- ✓ Bleach, bowl cleaners
- ✓ Lawn and garden products including pesticides, herbicides, fungicides, fertilizer
- ✓ Turpentine
- ✓ TVs, stereos
- ✓ Bug sprays
- ✓ Lighter fluid
- ✓ Video tapes, floppy disks, digital tapes, CDs, DVDs
- ✓ Cleaning solvents
- ✓ Metallic mercury
- ✓ Corrosive cleaners
- ✓ Wood preservatives

## MATERIALS NOT ACCEPTED

- ⊗ Ammunition, explosives
- ⊗ Construction / demolition debris
- ⊗ Fireworks
- ⊗ School lab waste
- ⊗ Non-residential waste
- ⊗ Appliances
- ⊗ Radioactive devices (smoke/fire detectors)
- ⊗ Furniture
- ⊗ Any liquid in containers larger than 5 gallons
- ⊗ Large gas cylinders such as helium, Freon or acetylene
- ⊗ Medical waste/all medicines
- ⊗ Power tools
- ⊗ Styrofoam including peanuts

**NO COMMERCIAL WASTE ACCEPTED  
EBR RESIDENTS ONLY, ID REQUIRED**

FOR MORE INFORMATION, VISIT [BRLA.GOV/DES](http://BRLA.GOV/DES)

# FUNDING THE EVENT:



- Request for Qualifications (RFQ) for vender selection
  - Current Contract holder (Chemicals and Electronics) – Clean Earth, Inc.
- Other Pre-existing Contracts:
  - Tires – Colt Inc.
  - Lavatories/ Handwash Stations- Kastel Enterprises MK LLC
- Direct Bids for services under \$5000:
  - Entrance/ Exit Signs – Traffic Control Products of LA, Inc.

# FUNDING THE EVENT: CONT.

- DPW, Police, EMS
- Free Services and Donations:
  - Batteries - Interstate Batteries of Baton Rouge
  - Electronics – CACRC (Capital Area Corporate Recycling Council)
  - Water, Gatorade, Soda – Donated by Republic Services and Coca Cola Bottling Co.



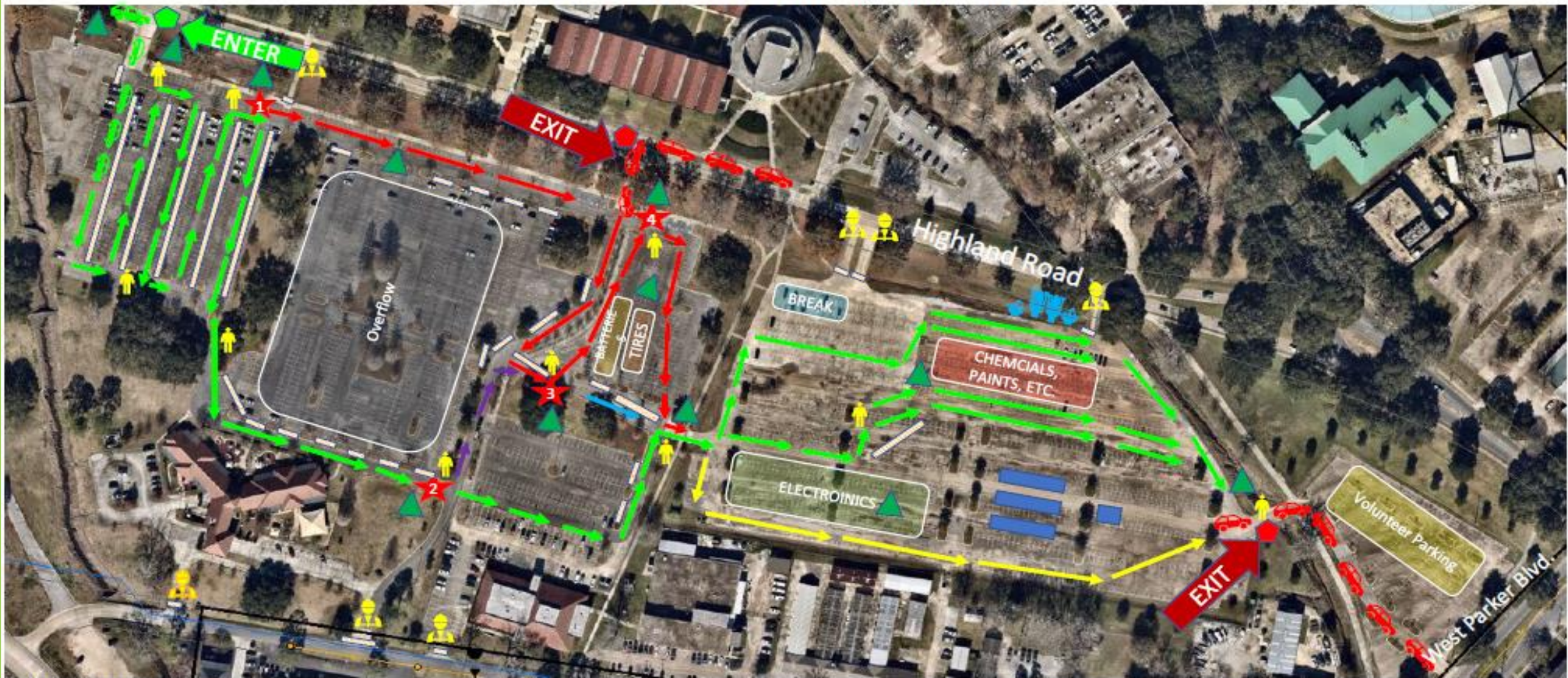
FOR MORE INFORMATION, VISIT [BRLA.GOV/DES](http://BRLA.GOV/DES)

# ORGANIZING AND TRAFFIC CONTROL:

- Date of the Event
- Contacting and Scheduling vendors/ City Parish entities/  
other organizations
- Site Arrangement
  - Day Before:
    - Traffic Control
    - Vender Stations
  - Day of:
    - Break area
    - Final vender set up



# Household Hazardous Materials Day – Site Plan



## LEGEND

★ Decision Point

👤 Critical Staff (10)



DPW or Police Vehicle with lights (7)



Type III Barricade – To Hang Large Vinyl Signs (10)

▨ Type II – 6 ft Long Barricades (250)

■ Clean Earth Staging Area (3 trailers and box truck)



Flashing HHMD Entrance Sign (1)



Flashing HHMD Exit Sign (2)



Sanitation Station



Port-a-Potty

# QUANTITIES OF MATERIALS COLLECTED:



On average we see approximately:

- Tires – 100 to 200 Tires (196 Tires from March 2024 Event)
- Batteries – 3000 to 4000lbs
- Chemicals – 15,000 to 20,000 Gallons (17,732 Gallons from March 2024 Event)
- Electronics – 30,000 to 45,000lbs (42,672lbs from March 2024 Event)



# CLEAN EARTH SPECIFICS:



## Personnel:

- Project Manager
- Health and Safety Officer
- Chemists (4 from March 2024 Event)
- Technicians (51 from March 2024 Event)

## Equipment:

- Forklifts (2 from March 2024 Event)
- Semi-Trailer Trucks (4 from March 2024 Event)

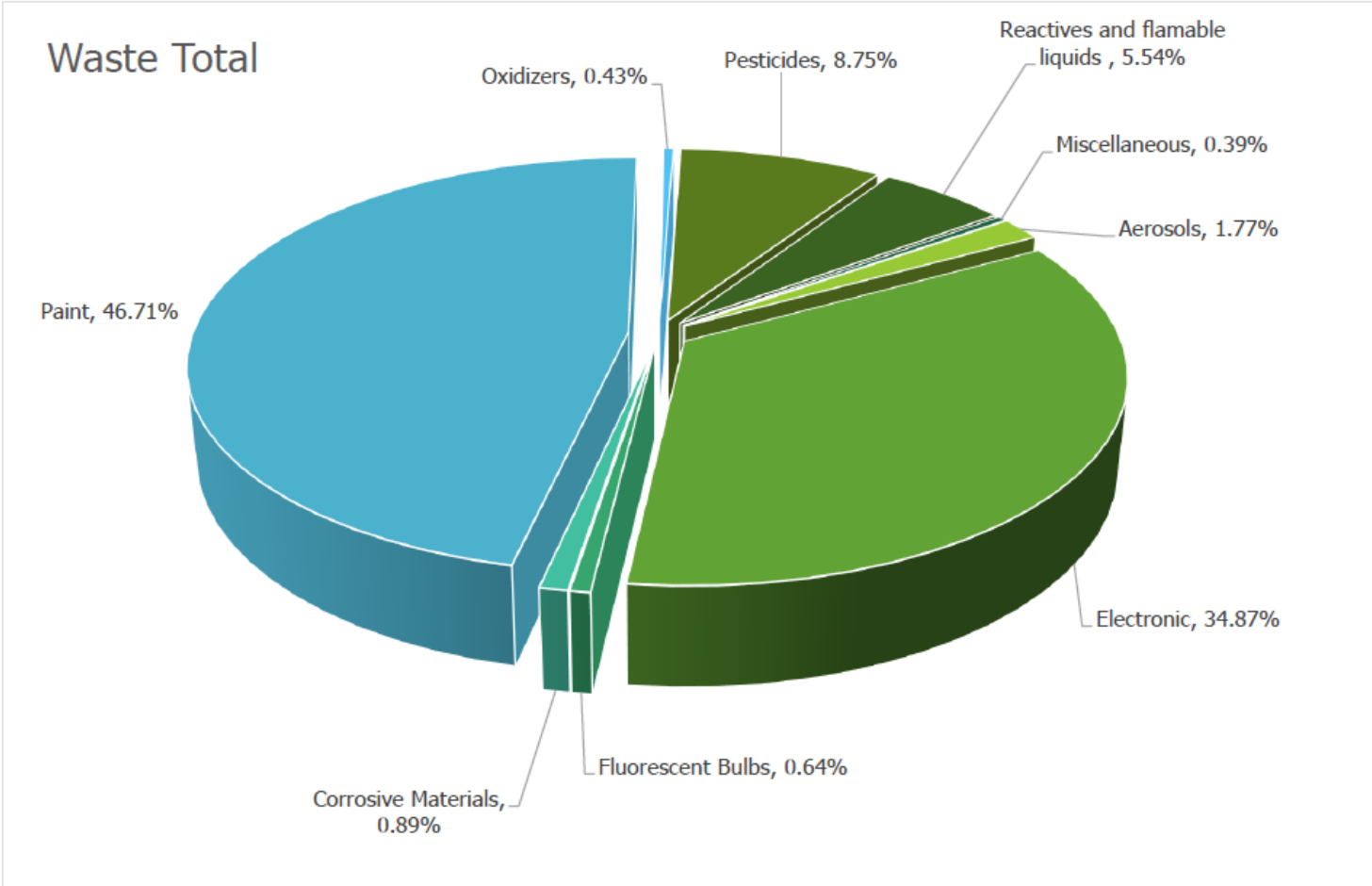
## Supplies:

- Pallets (190 from March 2024 Event)
- Containers/Drums/Boxes
- Tarps
- PPE

## Invoice From March 2024:

- \$231,227.03

**2023 Household Hazardous Waste Collection Summary**



# GENERAL COSTS:

- City/Parish – \$10,000 to \$35,000 Overtime & Equipment
- Clean Earth - \$150,000 to \$250,000 (\$231,227 invoice from March 2024)
- Port a Potty/Hand wash Stations - \$500 (Includes recovery fee)
- Entrance/Exit Message Boards - \$2100
- Advertisements - \$5,000 to \$10,000
  
- Expected Total for the event - \$250,000 to \$300,000



# CHALLENGES:



- Location / Dates
  - Centrally located/large parking lot with good access roads
  - Lock in date early because Clean Earth's schedule fills up
  - Cannot be on the same day as any other events parades, football games, holidays charity runs, etc. to avoid
    - Strain on Resources (Police, DPW)
    - Logistics/Traffic
    - Decreased Participation
  - Cannot Allow Traffic Backup on to the major thoroughfares
- Advertising the Event
- Setup/Clean Up – A lot happens in a less than 24-hour period – no waste can be left onsite, and location must be returned to its original condition
- Efficiently servicing 900 – 1,500 vehicles in a 4-hour Period
- Costs

HOUSEHOLD HAZARDOUS MATERIALS COLLECTION DAY



WE ACCEPT  
**TIRES**  
(LIMIT 5 TIRES PER VEHICLE)

[BRLA.GOV/RECYCLE](http://BRLA.GOV/RECYCLE)



HOUSEHOLD HAZARDOUS MATERIALS COLLECTION DAY



ELECTRONICS AND  
**BATTERIES**

- ✓ TVS, STEREOs, VIDEO TAPES, FLOPPY DISKS, DIGITAL TAPES, CDS, AND DVDS
- ✓ ELECTRONIC EQUIPMENT, INK CARTRIDGES, COPIERS, CELL PHONES, FAX MACHINES, AND COMPUTERS
- ✓ BATTERIES: AUTOMOTIVE, LEAD ACID, RECHARGEABLE, LITHIUM, LITHIUM-ION, ALKALINE (AA, AAA, C, D, ETC.)

[BRLA.GOV/RECYCLE](http://BRLA.GOV/RECYCLE)



HOUSEHOLD HAZARDOUS MATERIALS COLLECTION DAY



CHEMICALS IN YOUR  
**HOUSE**

- ✓ HOUSEHOLD CLEANERS (BLEACH AND BOWL CLEANERS, OVEN CLEANERS, DRAIN CLEANERS, ETC.)
- ✓ CORROSIVE CLEANERS
- ✓ DISINFECTANTS
- ✓ BUG SPRAY
- ✓ COOKING OIL
- ✓ DEGREASERS
- ✓ FLUORESCENT TUBES AND COMPACT FLUORESCENT BULBS

[BRLA.GOV/RECYCLE](http://BRLA.GOV/RECYCLE)



HOUSEHOLD HAZARDOUS MATERIALS COLLECTION DAY



WE ACCEPT  
**LATEX PAINT & PAINT CANS**

[BRLA.GOV/RECYCLE](http://BRLA.GOV/RECYCLE)



HOUSEHOLD HAZARDOUS MATERIALS COLLECTION DAY



SATURDAY, MARCH 2 | 9 A.M. TO 1 P.M.  
LSU TOUCHDOWN VILLAGE, S. QUAD DR.

OPEN TO ALL EAST BATON ROUGE PARISH RESIDENTS  
DON'T FORGET YOUR ID!

[BRLA.GOV](http://BRLA.GOV)

HOUSEHOLD HAZARDOUS MATERIALS COLLECTION DAY



THINGS IN YOUR  
**GARAGE**

- ✓ FUEL FILTERS
- ✓ DEGREASERS
- ✓ ANTIFREEZE
- ✓ BRAKE FLUID
- ✓ OIL MIXTURES
- ✓ AUTOMOBILE TIRES
- ✓ GASOLINE
- ✓ MOTOR OIL

[BRLA.GOV/RECYCLE](http://BRLA.GOV/RECYCLE)



HOUSEHOLD HAZARDOUS MATERIALS COLLECTION DAY

WE DO NOT ACCEPT:

- ⊗ AMMUNITION
- ⊗ MEDICAL WASTE
- ⊗ FIREWORKS
- ⊗ RADIOACTIVE DEVICES
- ⊗ STYROFOAM
- ⊗ POWER TOOLS
- ⊗ APPLIANCES
- ⊗ FURNITURE

[BRLA.GOV/R](http://BRLA.GOV/R)

HOUSEHOLD HAZARDOUS MATERIALS COLLECTION DAY



WE ACCEPT  
**FLUORESCENT TUBES & COMPACT FLUORESCENT BULBS**

[BRLA.GOV/RECYCLE](http://BRLA.GOV/RECYCLE)



HOUSEHOLD HAZARDOUS MATERIALS COLLECTION DAY



OUTSIDE  
**CHEMICALS**

- ✓ GARDEN CHEMICALS
- ✓ LAWN CHEMICALS
- ✓ POOL CHEMICALS

[BRLA.GOV/RECYCLE](http://BRLA.GOV/RECYCLE)



HOUSEHOLD HAZARDOUS MATERIALS COLLECTION DAY



WE ACCEPT  
**FIRE EXTINGUISHERS!**

[BRLA.GOV/RECYCLE](http://BRLA.GOV/RECYCLE)





THANK YOU  
**QUESTIONS?**

