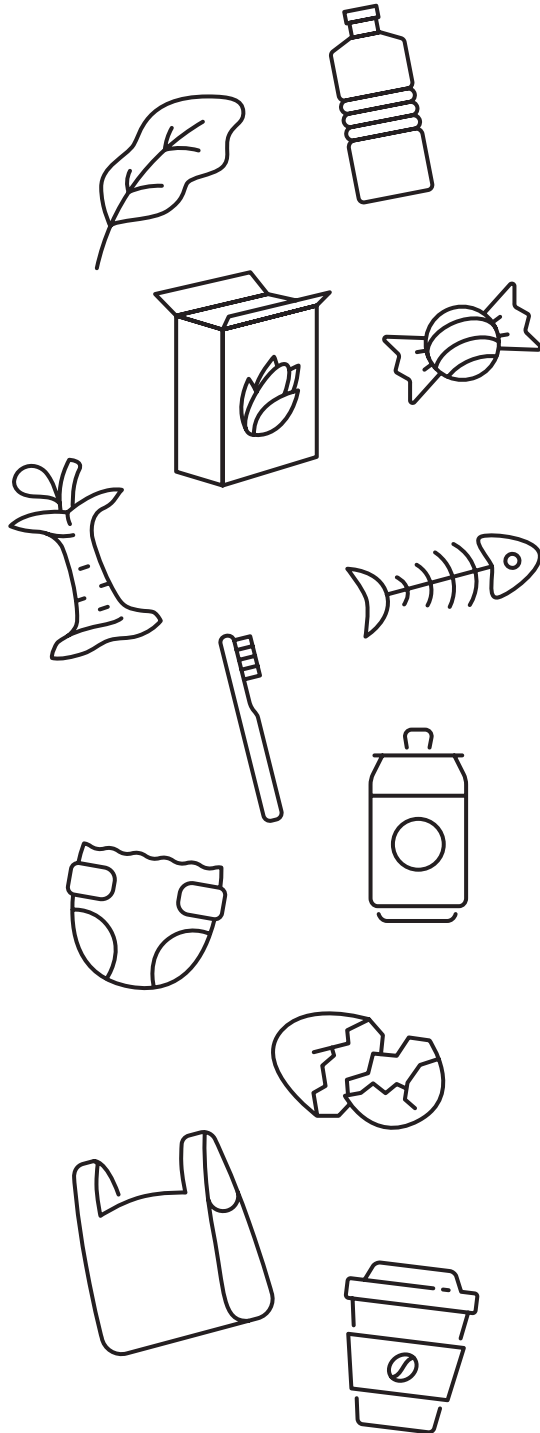
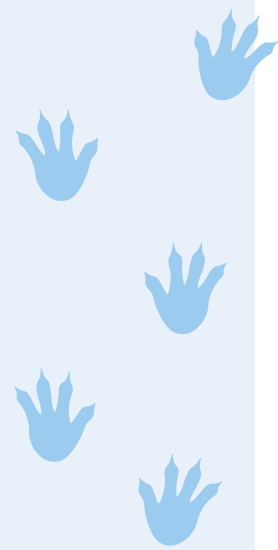


Put Litter In Its Place

Hi friend, it's me Rocksey. I need your help to keep Louisiana beautiful. **Draw lines to help me sort the waste into the right container.** Only four items belong in each bin.



I know all waste isn't the same. It's divided into three groups based on whether or not it can be used again — **compost, recyclables,** and **trash** for landfills. It's important to reduce the trash we create by composting and recycling so we send less to landfills.



Compost - Leaf, Fish Bone, Apple Core, Egg Shell
Recycle - Plastic Bottle, Plastic Bag, Cereal Box, Aluminum Can
Landfill - Candy Wrapper, Diaper, Coffee Cup, Toothbrush