

PARADE WASTE REDUCTION

2023 KLB STATE CONFERENCE 10.10.23



*WASTE PREVENTION, RECYCLING &
SUSTAINABLE PRODUCTS FOR NOLA EVENTS*

CONTENT:

- WASTE TYPES & EFFECTS
- CHALLENGES
- RECYCLING & REUSE
- PREVENTION

WASTE SUMMARY

NOLA PARADE WASTE:

Each year, as much as 1,300 tons, or 2.6 million pounds, of waste is collected off New Orleans streets during just 11 days of carnival season.



None of the waste collected by the city is reused or recycled.

WASTE TYPES

Parade Throws - beads, cups, plush toys, trinkets (**reusable**) broken + light up/battery throws (**not reusable**)

Aluminum - single use drink cans w/ low contamination, light weight (**recyclable**)

Plastic - single use #1 #2 drink bottles (**recyclable**), go cups, food bags, throw bags and tarps (**non-recyclable**)

Paper - dry cardboard throw packaging (**recyclable**) and contaminated food packaging (**non-recyclable**)

Polystyrene - "styrofoam" cups and food packaging (**non-recyclable**)

~75%
recyclable
or reusable



WASTE EFFECTS

1. Environment (local) - waste accumulates in soil, waterways and landfills. micro-plastics & chemical leaching.



2. Environment (global) - carbon footprint of energy and emissions required to produce, ship and dispose of unwanted parade throws.



3. Infrastructure - waste hinders city storm water drainage, private trash bins, bike lanes.



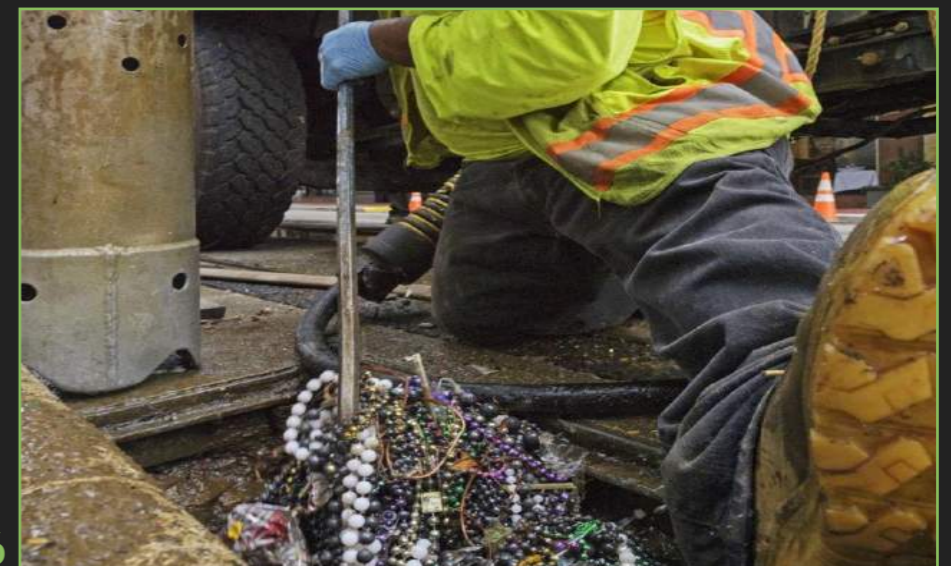
4. Health & Safety - throws contain toxins like lead, phallates and fire retardants.



5. Aesthetic - waste collects on streets, neutral grounds, yards, and trees which shed throws year round.



6. Cost - 1.5 million in taxpayer dollars spent annually for labor, equipment, transport and landfill costs.



WASTE RECYCLING & REUSE

"ON THE ROUTE" THROWS, CANS & PLASTIC BOTTLES RECYCLING



IMPACT TO DATE:

- ~32,000LBS OF THROWS COLLECTED ON THE ROUTE
- ~280,000LBS DONATED FOR REUSE ANNUALLY
- ~18,000 CANS & BOTTLES DIVERTED



RECYCLING STATIONS, HUBS & POINTS ALONG TARGETED SECTION OF ROUTE



VISIBILITY & ACCESS



EMPOWERING PUBLIC VS. CLEAN UP CREW



FREE THROW DONATION BAGS

WASTE RECYCLING & REUSE

YEAR ROUND THROW DONATION DROP OFFS:

- Community Centers
- Fire Stations
- Grocery Store Bins
- Churches
- Schools



Orleans Parish:

ARC GNO UPTOWN COMMUNITY CENTER - 1771 Nashville Ave.

WHOLE FOODS UPTOWN - 5600 Magazine St.

STRIVE CENTER - 1139 Napoleon Ave.

ST. MICHAEL SPECIAL SCHOOL - 1522 Chippewa St.

NEW ORLEANS SANITATION DEPARTMENT - 2829 Elysian Fields Ave
(Drop-off available only on the 2nd and 4th Saturday of each month, 8am - 1pm)

Jefferson Parish:

ARC GNO METAIRIE COMMUNITY CENTER - 925 Labarre Rd., Metairie

JEFFERSON PARISH SANITATION DEPARTMENT - 400 David Dr., Metairie

ARC GNO WESTWEGO COMMUNITY CENTER - 333 Sala Ave., Westwego

JEFFERSON PARISH SANITATION (WESTBANK) - 6440 Lapalco Blvd., Marrero

Other Parishes:

ARC GNO CHALMETTE COMMUNITY CENTER - 3700 Jean Lafitte Pkwy., Chalmette

ARC GNO NORTHSORE COMMUNITY CENTER - 106 E. 25th Ave., Covington

STARC OF LOUISIANA (MANDEVILLE) - 1705 Viola St., Mandeville

STARC OF LOUISIANA (SLIDELL) - 40201 Highway 190 East, Slidell

ANY ST. TAMMANY DISTRICT 1 FIRE STATION (SLIDELL):

Station 11 (322 Bouscaren Street)

Station 12 (1570 West Hall Avenue)

Station 13 (530 Robert Blvd.)

Station 14 (297 Steele Road)

Station 15 (58405 Holly Drive)

Station 16 (320 Marina Drive)

Station 17 (309 Johnny F. Smith Blvd.)

Station 18 (61735 Airport Road)

WASTE PREVENTION

SUSTAINABLE THROW CATALOG

- AFFORDABLE, ECO-FRIENDLY THROWS THAT ARE FUNCTIONAL, CONSUMABLE & MADE SUSTAINABLE MATERIALS.

- USE UNBRANDED LOCAL PRODUCTS TO AVOID PARADE COMMERCIALIZATION.

- USE VOLUNTEERS & PAID DISADVANTAGED LABOR FORCES TO ASSEMBLE THROWS.

☰ MENU

Grounds KREWE

Camellia BRAND

JAMBALAYA GIRL from NEW ORLEANS

NEW ORLEANS ROAST

Mardi Gras Soap Bar
from \$51.00

Mardi Gras Jambalaya - 50 Pack
\$98.00

Mardi Gras Red Beans - 50 Pack
\$92.00

Mardi Gras Coffee - 50 Pack
\$95.00

Bamboo Toothbrush Set
from \$35.00

Sugar Hand Scrub
from \$33.00

Mardi Gras Honey Straws
from \$22.00

Cajun Boil Sunflower Seeds
from \$24.00

Mardi Gras Mix Tea Time Kit
from \$27.00

Mardi Gras Popcorn - 50 Pack
from \$72.00

Louisiana Native Flower Starter Kit
from \$27.00

Festin' Fragrance & Bug Spray
from \$18.00