

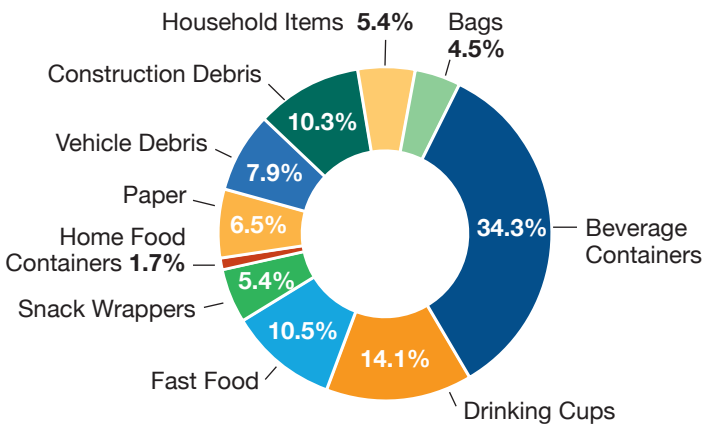


## KEY FINDINGS: Roadway Litter Survey

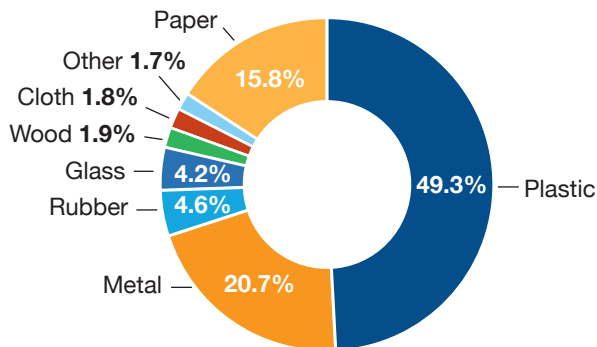
There are approximately 143.8 million pieces of litter on Louisiana roadways. Interstates are the most littered type of roadway, with an average of 10,178 pieces of litter per mile.

# 143.8 MILLION PIECES OF LITTER

### Visible Litter by Category

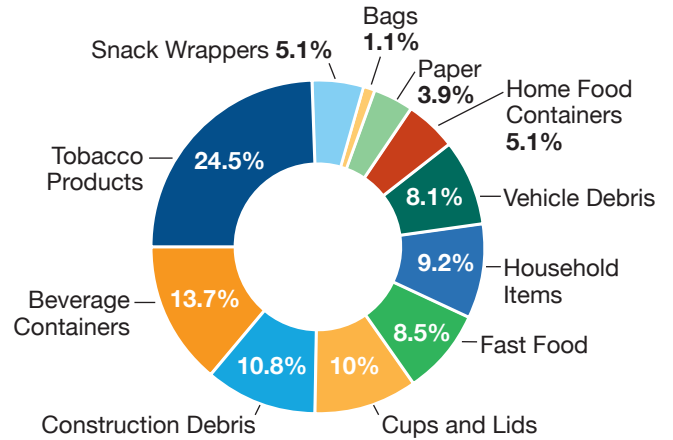


### Visible Litter by Packaging Material



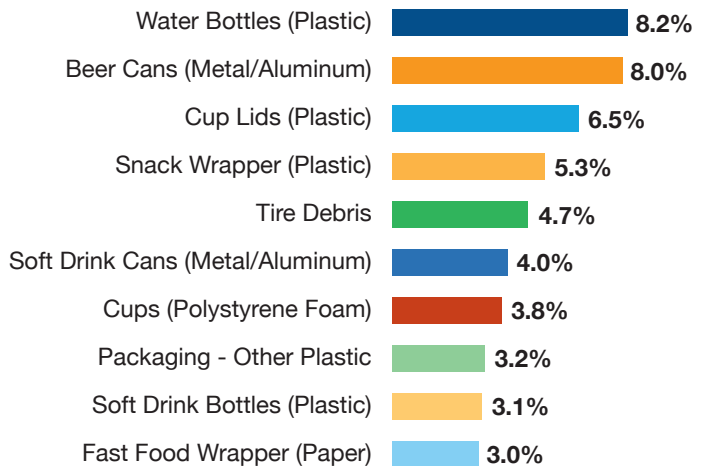
### Aggregate Litter by Category

Aggregate litter is a combination of Micro Litter (< 4") and Visible Litter (> 4").



### Top 10 Visible Litter Items

Over 61.9 million plastic items were found on Louisiana roadways. Plastic water bottles were found at 80% of surveyed sites. Nearly 42% of Visible Litter was composed of recyclable materials like metal, plastic containers, and paper products.

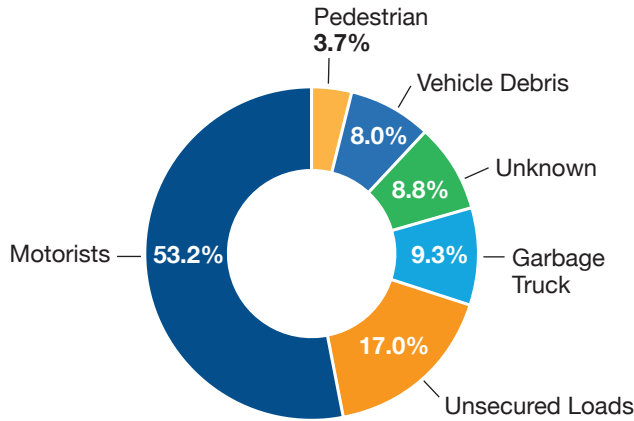


One of the recommendations from the Governor's Task Force on Litter Abatement and Beautification was to conduct comprehensive litter research to better understand and address the problem. Thanks to funding from the Louisiana State Legislature and the Office of the Lieutenant Governor, Keep Louisiana Beautiful oversaw the state's first litter research in over a decade. The research consists of three parts—the Roadway Litter Survey, the Public Attitude Survey, and the Litter Cost Study. Scan the QR code to read all reports.

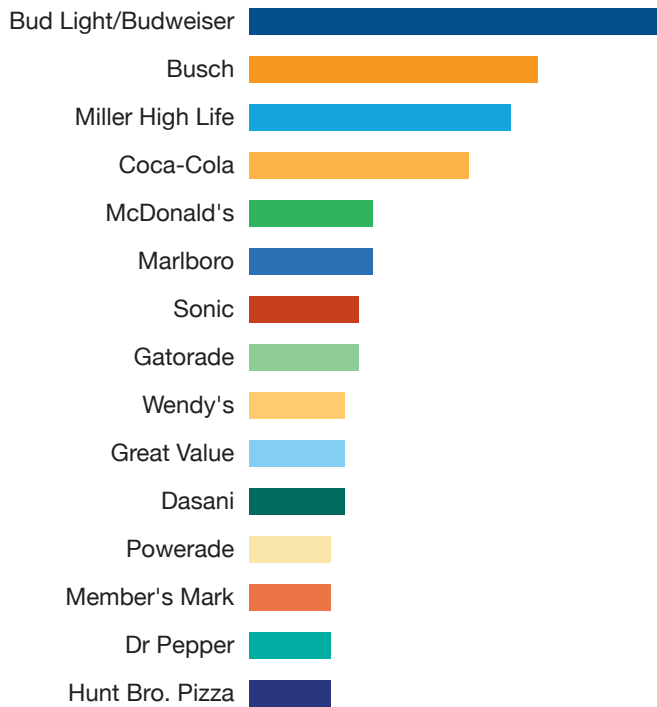




## Top Sources of Roadway Litter



## Top 15 Most Common Brand Names of Roadway Litter



## Correlations and Recommendations:

**CORRELATION:** Less litter was found near sites with trees, shrubs, plantings, and similar enhancements.

**RECOMMENDATION:** Encourage beautification as sites that were not beautified or well-maintained had 38% more litter.

**CORRELATION:** The dispersal of Micro Litter is directly related to mowing.

**RECOMMENDATION:** Ensure litter removal prior to mowing roadsides to reduce the spread of Micro Litter.

**CORRELATION:** Beverage containers are frequently near drainage ditches and utilities.

**RECOMMENDATION:** Don't throw trash out the window. Keep a bag in your car for trash.

**CORRELATION:** Beverage containers, cups, fast food items, and bags are often close to solid waste facilities.

**RECOMMENDATION:** Tie down unsecured loads and ensure trash is bagged and tied for garbage pick-up.

**CORRELATION:** Beverage cups are likely found in proximity to fast food establishments. Fast food items are likely near businesses and commercial enterprises.

**RECOMMENDATION:** Create litter prevention messaging for fast food and beverage points of sale.

## Additional recommendations to reduce roadside litter:

- Encourage the enforcement of the litter laws.
- Expand Adopt-A-Road programs and youth litter education.
- Expand KLB affiliation through community and university partners.

The study was conducted by a Project Team led by Carson Consulting. The team consisted of Tetra Tech BAS, Steve Stein, and numerous individuals with an extensive history of conducting national, state, and local research studies. Working with the Louisiana Department of Transportation and Development (LADOTD) and KLB, the Project Team selected 137 sites (Interstates, US Roadways and LA Roadways) within every parish and in all nine LADOTD districts to survey. Field crew members identified the litter category, specific item, and the packaging materials. Visible litter (4 inches or larger) was grouped into 10 categories, and Micro litter (less than 4 inches), was grouped into 11, including tobacco.

